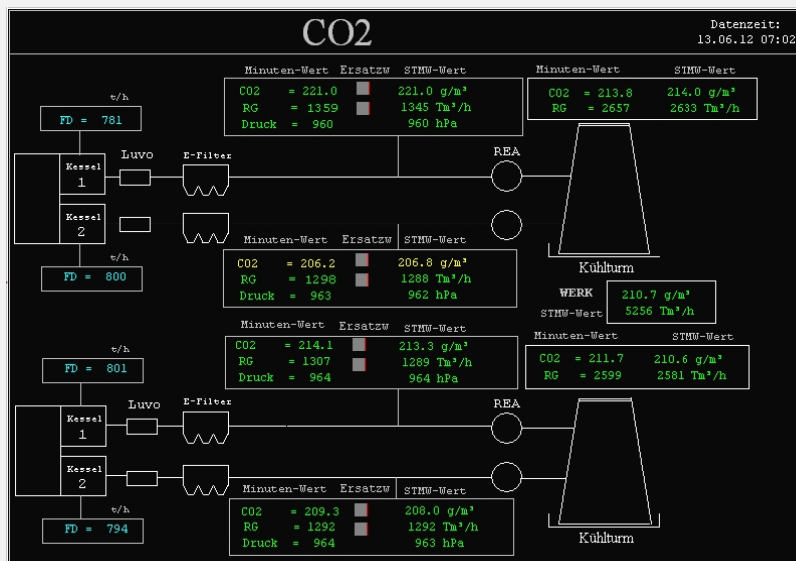


# NEW !

## D-EMS 2000 CO<sub>2</sub>

# Software module for CO<sub>2</sub> data acquisition, processing and evaluation of the Environmental and Process Data Management system D-EMS 2000

(Available as a standalone program or as a software extension parallel to the regulatory emission evaluation)



Example with two cooling towers

- Complies with requirements of the Monitoring Guidelines (Commission Decision 18/VII/2007, guidelines for the purposes of Directive 2003/87/EC) and has all the necessary procedures to meet these
- Data capture of CO<sub>2</sub>, flow, pressure, temperature, humidity etc.
- Providing a replacement value for maintenance, fault or other error
- Recalculation or recomputation, e.g. necessary to adjust the calibration

